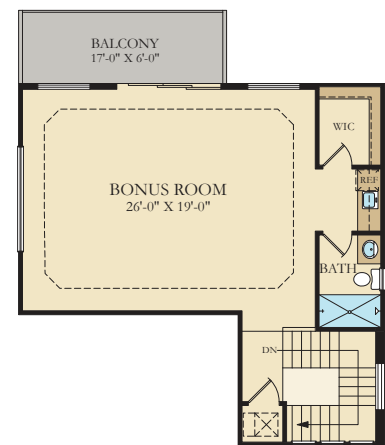


Laurel

3 Bedrooms | 4 Baths | Den | Bonus Room | 3-Car Courtyard Garage



FIRST FLOOR



SECOND FLOOR

3,005 Sq. Ft. First Floor
686 Sq. Ft. Second Floor

3,691 Sq. Ft. Total Living A/C

71 Sq. Ft. Entry
347 Sq. Ft. Lanai
656 Sq. Ft. Garage

4,765 Sq. Ft. Total

WildBlue

WCI
A LENNAR COMPANY

ei
EVERYTHING'S INCLUDED™

Elevations of a home may vary and we reserve the right to substitute and/or modify design and materials, in our sole opinion and without notice. Please see your actual home purchase agreement for additional information, disclosures and disclaimers related to the home and its features. Please see your New Home Consultant and home purchase agreement for actual features designated as an Everything's Included feature, additional information, disclosures, and disclaimers relating to your home and its features. Plans are artist's renderings and may contain options which are not standard on all models. Lennar reserves the right to make changes to plans and elevations without prior notice. Stated dimensions and square footage are approximate and should not be used as representation of the home's precise or actual size. Any statement, verbal or written, regarding "under air" or "finished area" or any other description or modifier of the square footage size of any home is a shorthand description of the manner in which the square footage was estimated and should not be construed to indicate certainty. Garage sizes may vary from home to home and may not accommodate all vehicles. Visit Lennar.com or see a Lennar New Home Consultant for further details and important legal disclaimers. This is not an offer in states where prior registration is required. Void where prohibited by law. Copyright © 2018 Lennar Corporation, Lennar, the Lennar logo, WCI, the WCI logo, Everything's Included and the Everything's Included logo are U.S. registered service marks or service marks of Lennar Corporation and/or its subsidiaries. LENNAR HOMES LLC CBC038894 and CGC1523282. LENNAR REALTY INC. (CQ1013633) 3/18.